



# 180

REVERSIBLE STROLLER

COMFORT  
CUSHION

INSTRUCTION MANUAL



More tips and videos on  
[ergobaby.com](http://ergobaby.com)

PLEASE READ ALL INSTRUCTIONS BEFORE USE. KEEP THIS FOR YOUR REFERENCE.

# ⚠ WARNING

## SUFFOCATION HAZARD

Do not leave the head and seat supports unsecured in the stroller with child in it.

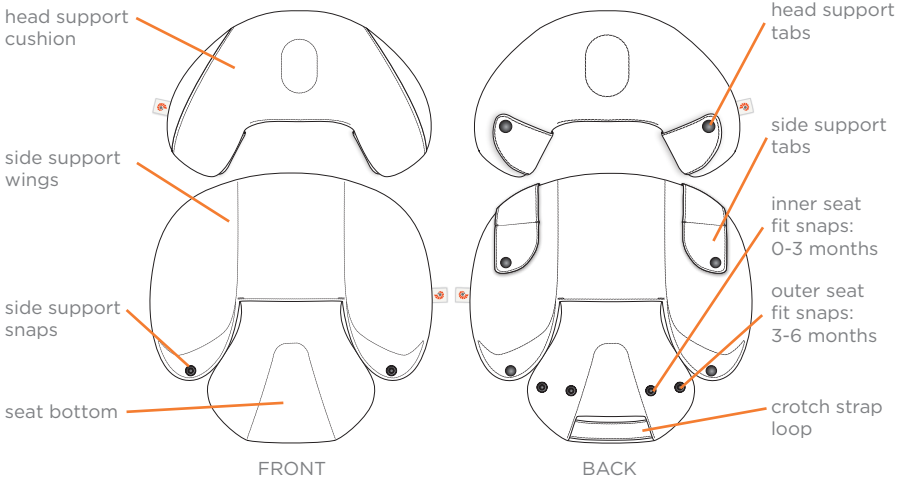
## CLEANING INSTRUCTIONS

Use mild detergent when washing.

Machine wash cold. Do not bleach. Tumble dry low. Do not iron. Do not dry clean.



## 180 REVERSIBLE STROLLER COMFORT CUSHION PARTS



Seat cushion usable for babies from 0-6 months;  
Head support usable for babies from 0-18 months.

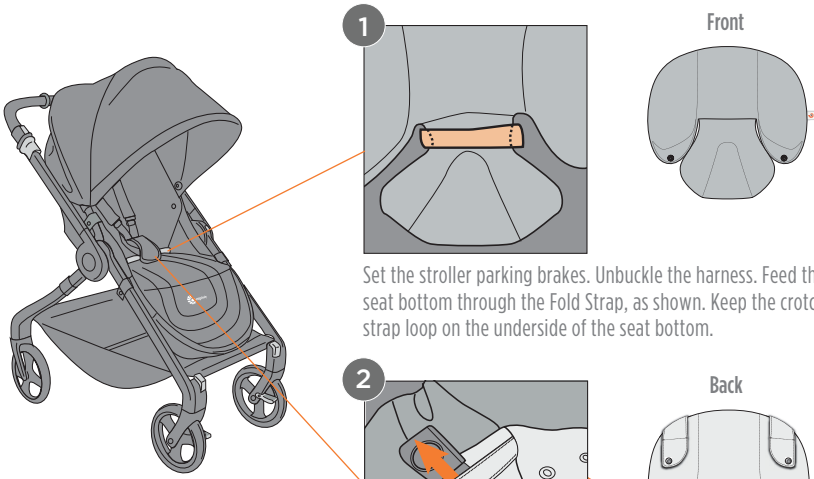


THE ERGOBABY CARRIER, INC.

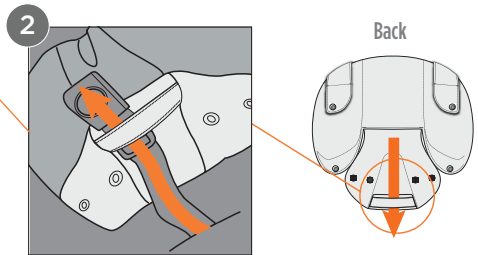
US: 617 West 7th St., Ste. 1000, Los Angeles, CA 90017 | (888) 416-4888 | info@ergobaby.com

IM-180CC-170227-V1

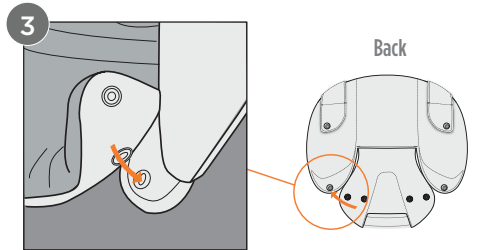
# TO ATTACH THE SEAT OF THE COMFORT CUSHION TO THE STROLLER



Set the stroller parking brakes. Unbuckle the harness. Feed the seat bottom through the Fold Strap, as shown. Keep the crotch strap loop on the underside of the seat bottom.



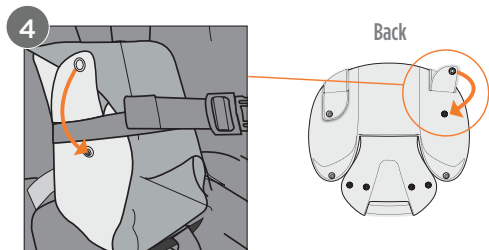
Feed the stroller crotch strap through the Comfort Cushion's crotch strap loop, located on the back side of the seat bottom, as shown (can be used with or without stroller crotch strap cover).



Affix the Side Support Snaps to the seat fit snaps according to your baby's age/size:

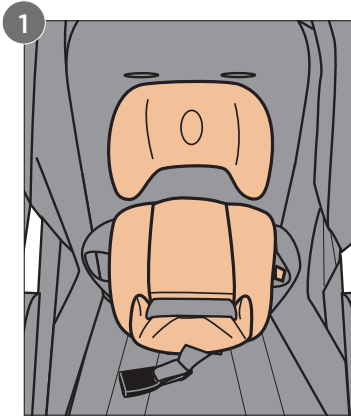
**Inner seat support snaps for 0-3 months**

**Outer seat support snaps for 3-6 months**



Wrap the Left and Right Side Support tabs around the waist belt of the Stroller harness, and secure the snaps of the support tabs as shown.

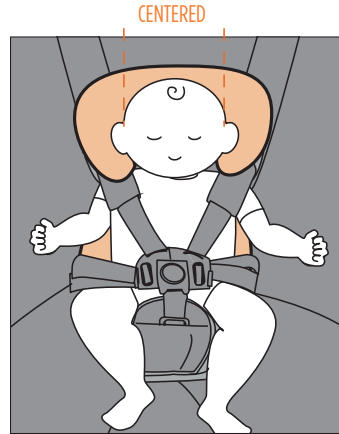
# TO ATTACH THE COMFORT CUSHION HEAD SUPPORT AND POSITION THE BABY



Seat cushion usable for babies from 0-6 months;  
Head support usable for babies from 0-18 months.

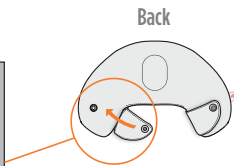
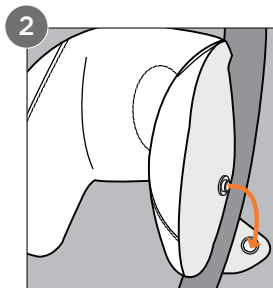
When using the 180 Reversible Stroller with infants under 3 months, both seat cushion and head support must be used.

**\* Reminder:** For babies without good head and neck control, fully recline the seat before placing your baby into the stroller. Follow your stroller's instruction manual to adjust the seat position.



Place the Head Support (snap-side down) so that baby's head is directly between the two sides of the cushion, as shown above.

Be sure the baby's head is vertically centered between the two sides of the head support cushion.



When you've found your desired position, slide the stroller's harness strap up or down as needed, and affix the head support to the shoulder straps of the stroller harness by wrapping the comfort cushion head support tabs around the shoulder strap covers and secure the snaps.

**Disclaimer:** Ergobaby™ uses only the highest quality and safest dyes possible to ensure a product that will retain its color. There is always a possibility that colors will fade with washing. Ergobaby cannot be held responsible for faded colors due to laundering.

**Warranty:** Please see Ergobaby.com for information about our warranty. The ERGO Baby Carrier, Inc. warrants its products against defects in materials and workmanship. We stand behind all our products and will either repair or replace, free of charge during the first 12 months after purchase, any Ergobaby™ stroller accessory that is defective. Proof of purchase is necessary and product must be returned for warranty service. Should you have a warranty claim, please contact Ergobaby Customer Service at: [customerservice@ergobaby.com](mailto:customerservice@ergobaby.com), or 888-416-4888. Warranty Coverage does not extend to damage caused by misuse or any use of the Stroller Accessory that is not in accordance with the instructions stated in this manual. Warranty coverage does not extend to any Stroller Accessory that has been modified from its original construction in any way. Different or additional warranty rights may exist in the purchaser's jurisdiction. To the extent that different or additional warranty rights exist under the laws of the purchaser's jurisdiction, those warranties shall apply and be in addition to the warranty rights.