



180

REVERSIBLE STROLLER

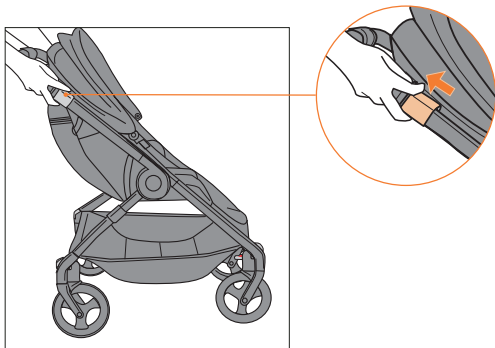
INSTRUCTION MANUAL



More tips and videos on
ergobaby.com

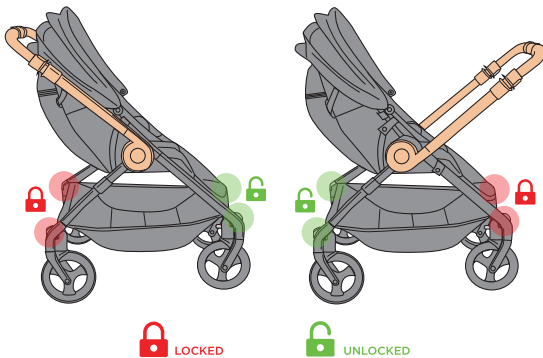
STROLLER OVERVIEW

Whether you want to check on baby or show baby the world, the 180 Reversible Stroller makes it easy to change direction on-the-fly.



1 FLIP THE HANDLEBAR

Simply pull up on the handlebar levers and guide the handlebar into your desired position.



2 SET YOUR WHEELS

Whether you're strolling with baby facing you, or facing the world, you can choose from a 4-wheel steering on smooth, level surfaces for best maneuverability or engage the steering locks on the 2 rear wheels (the wheels closest to you), and keep the front two wheels unlocked to steer for a traditional strolling experience.

A green strip around the base of the indicator shows when wheels are free to swivel and steer. When locked, the green strip is no longer visible.



THE ERGObaby CARRIER, INC.

US: 617 West 7th St., Ste. 1000, Los Angeles, CA 90017 | (888) 416-4888 | info@ergobaby.com



More tips and videos on
[ergobaby.com](https://www.ergobaby.com)

IM-180-171010-V4

Important: Keep these instructions for future reference and read them carefully before use.

Failure to follow these warnings and the instructions could result in serious injury or death. Prevent serious injury or death:

WARNING

PREVENT SERIOUS INJURY OR DEATH:

- NEVER leave your child unattended
- Maximum child weight is 50 lbs (23 kg).
- Always provide the supervision necessary for the continued safety of your child.
- Stroller must be fully erected and locked in position prior to use.
- Use caution when pushing stroller near traffic or in highly congested areas.
- This product is not suitable for running or skating.
- To avoid injury, ensure that your child is kept away when unfolding and folding this product.
- Do not let your child play with this product. Keep the stroller away from the child when not in use.
- Do not let others use the Ergobaby 180 Reversible Stroller or its accessories unless they understand how to properly use them.
- Do not use the stroller if any part is damaged, broken, torn or missing. Use only replacement parts and accessories supplied and approved by the manufacturer. If the instruction manual is missing or you need replacement parts or assistance, see the contact information included with this product.
- Do not use with more than one child in the seat at a time.
- Do not put objects on top of the sunshade. The weight of the objects may cause the sunshade to collapse.
- The stroller when used in conjunction with a car seat is not intended for prolonged periods of sleeping and does not replace a cot or a bed. Should your child need to sleep, a crib/cot, bed, or appropriate sleep product should be used.

FALL HAZARD: Avoid serious injury from falls, sliding out, or tip over

- Always use the complete stroller restraint harness to secure the child.
- Do not carry or lift the stroller with child in it.
- DO NOT use stroller on stairs or escalators.
- DO NOT lift or carry stroller by the sunshade, snack tray (sold separately), or car seat adapter (sold separately).
- Do not place parcels or accessory items on the stroller unless made by or specifically approved by Ergobaby. Added parcels or accessory items can make the stroller become unstable.
- Any load attached to the handle affects the stability of the stroller. Do not hang diaper bags, including the Ergobaby diaper bag, on the stroller handlebar. When storing the Ergobaby diaper bag, it must be placed in the basket.
- Do not place more than 1 lb (0.5 kg) in the cup holder. Do not use cups that are taller than 7.8 inches (200 mm) as they may fall out of the cup holder when strolling.
- Do not place more than 3 lb (1.4 kg) in the seat back pocket. Do not place more than 20 lb (9 kg) in the basket. Excessive weight may cause a hazardous unstable condition to exist. Do not use the basket as a child or pet carrier.

- Never let your child climb into or out of the stroller unassisted.
- Lock the parking brakes and check stability of the stroller when the stroller is stationary and before placing your child in or removing your child from the stroller.
- NEVER leave stroller unattended on a hill or incline even when parking brakes are locked.
- Check that the car seat and its adapter (both sold separately) are correctly engaged before use.
- Wheel can detach and cause tip over. Pull on the wheel to ensure it is securely attached when installing the wheels.

STRANGULATION HAZARD:

- Children have STRANGLED in loose or partially buckled harness straps. Fully restrain the child at all times. NEVER leave child in the stroller when straps are loose or undone.
- Do not place in or near this stroller any cord, strap or similar item that could become wrapped around a child's neck.
- Do not place this stroller near a window or a patio door where a child could reach the cord of a blind or curtain and be strangled.

AVOID BURN INJURY:

- Never use the cup holder to hold hot liquids. These liquids may splash and spill onto you or your child and cause injury.

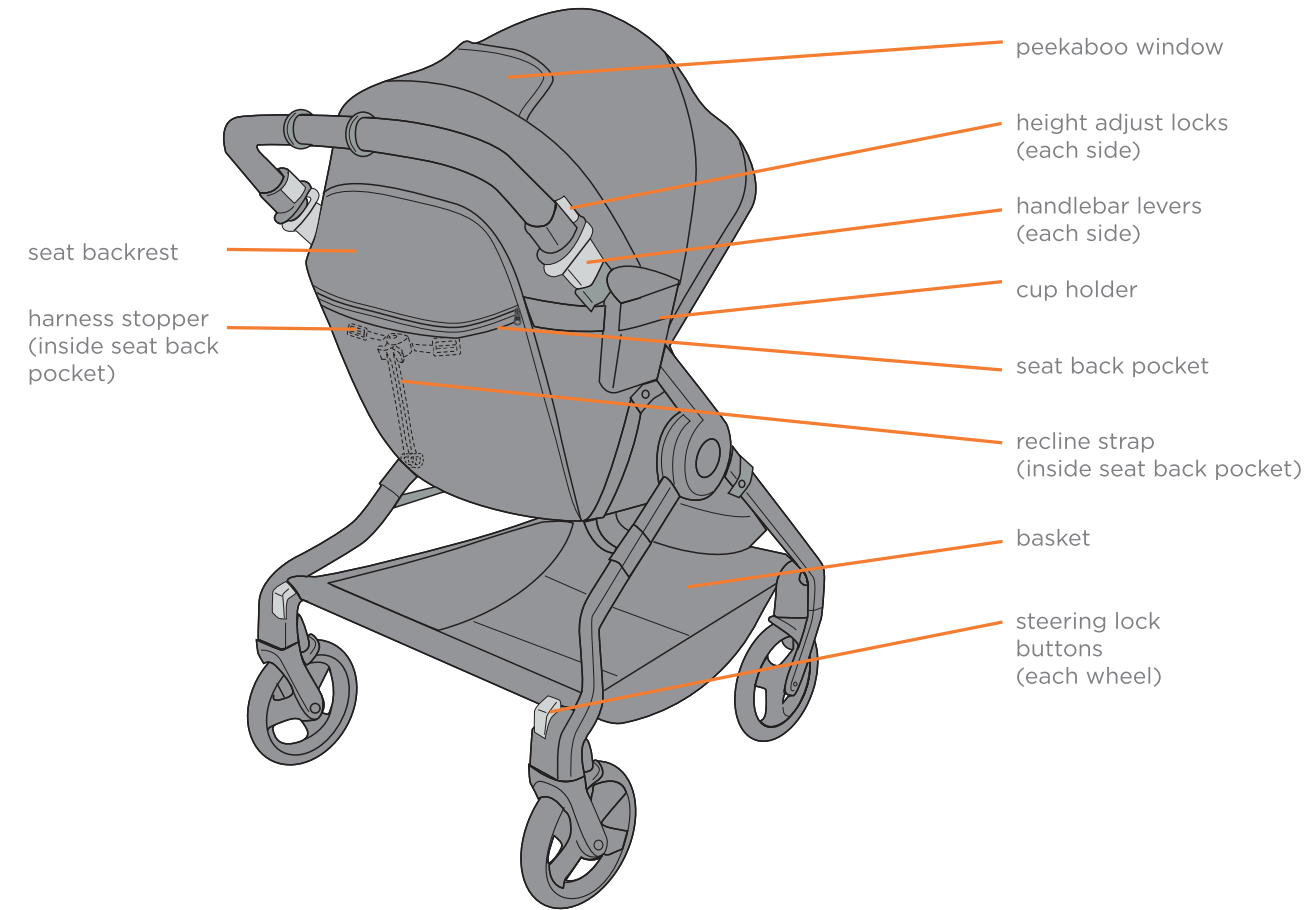
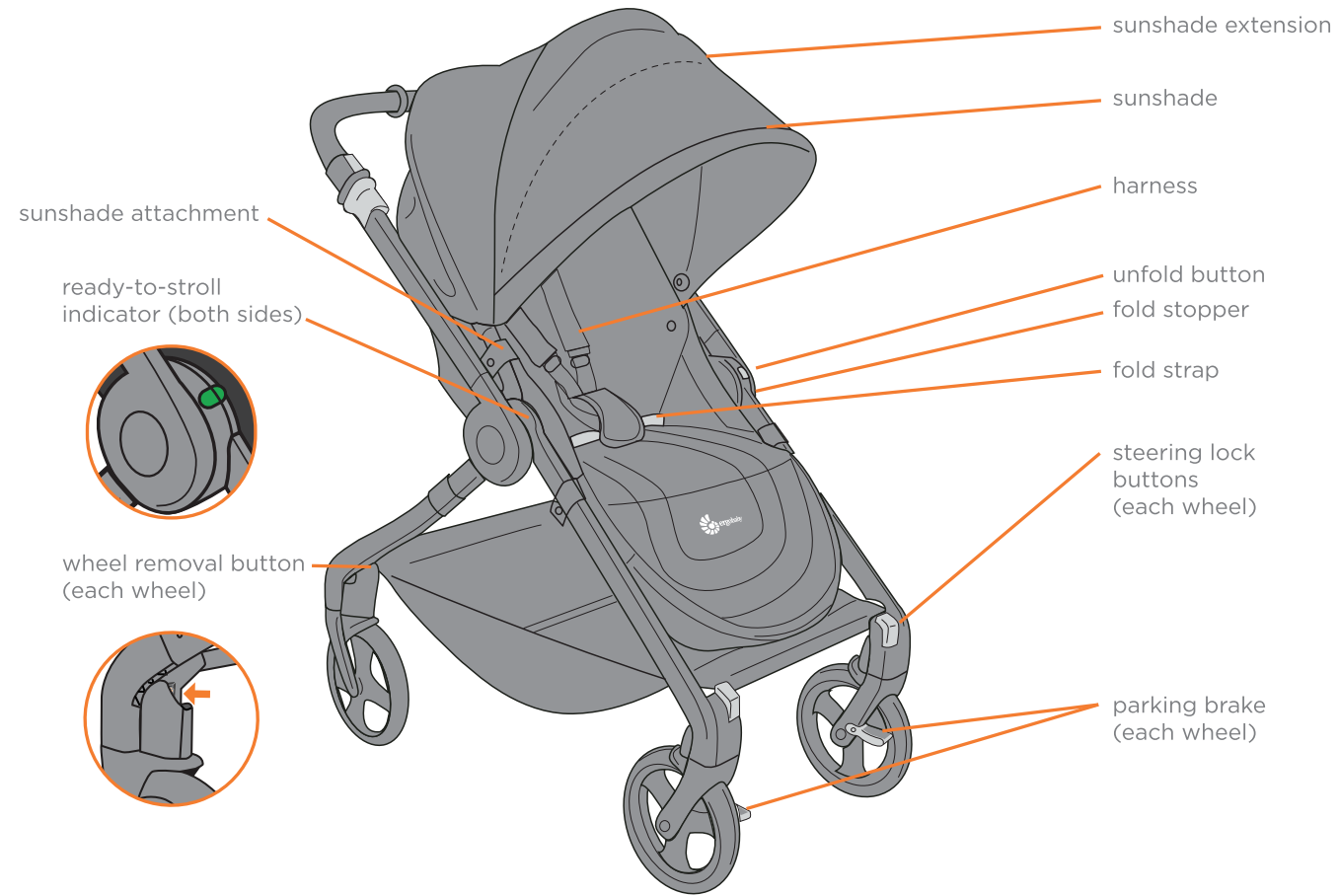
AVOID LOSS OF CONTROL OF THE STROLLER:

- The 4-wheel steering should only be used only on smooth, level surfaces. ALWAYS engage the steering locks on the wheels underneath the handlebar when pushing stroller on rough or inclined surfaces.
- Always engage all 4 steering locks when pushing stroller on extremely uneven terrain.
- Use caution when pushing stroller on uneven terrain or hills.
- ALWAYS lock the rear parking brakes when the stroller is stopped.

AVOID PINCH INJURY:

- Keep children away when folding and unfolding the stroller. Keep your fingers and other body parts clear of moving parts when folding and unfolding the stroller.
- Stroller must be fully erected and locked in position prior to use. Listen for the audible CLICK from the handlebar and seatback to confirm it is fully deployed. Move the seat backrest back and forth a few times to ensure it is locked, and confirm the ready-to-stroll indicators are aligned before putting your child in the stroller.
- Ensure that all the locking devices are engaged before use.
- Keep hands and fingers, especially of children, clear of moving parts as you secure your child in the stroller.
- When flipping the handlebar between forward-facing and parent-facing positions, always ensure all your child's body parts are clear of moving parts.
- Only use the car seat adapter (sold separately) with the handlebar in the forward-facing position. Do not flip the handlebar when the car seat adapter is docked onto the stroller.

180 REVERSIBLE STROLLER PARTS



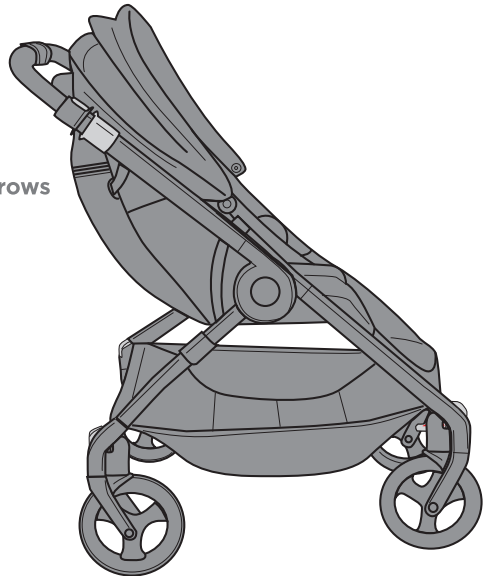
Product illustrations may not reflect the actual appearance of the enclosed product.

All product specifications are subject to change.

The product information (model number, manufacture date) is located on the frame tubes above the basket.

TABLE OF CONTENTS

- 1** How to assemble the stroller
- 2** How to flip the handlebar between the Forward-Facing & Parent-Facing positions
- 3** How to use the steering locks
- 4** How to fold the stroller
- 5** How to unfold your stroller
- 6** How to use the stroller brakes
- 7** How to adjust the handlebar height
- 8** How to secure your child
- 9** How to adjust the straps as your child grows
- 10** How to adjust the seat recline
- 11** How to use the sunshade
- 12** How to fold the stroller for storage
- 13** Cleaning Instructions / Warranty



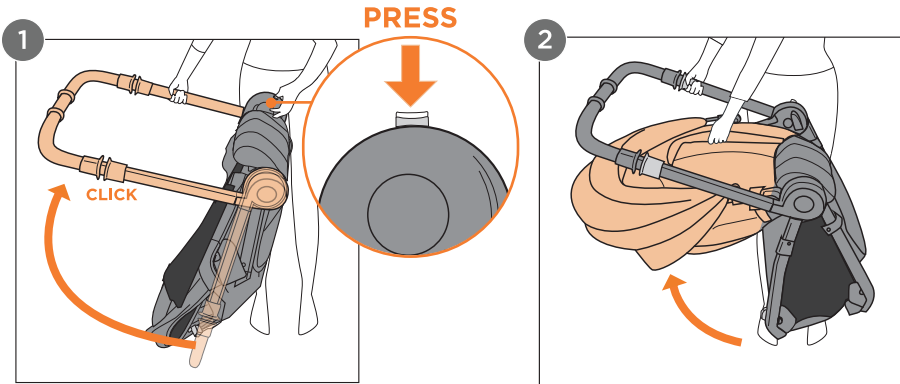
1

HOW TO ASSEMBLE THE STROLLER



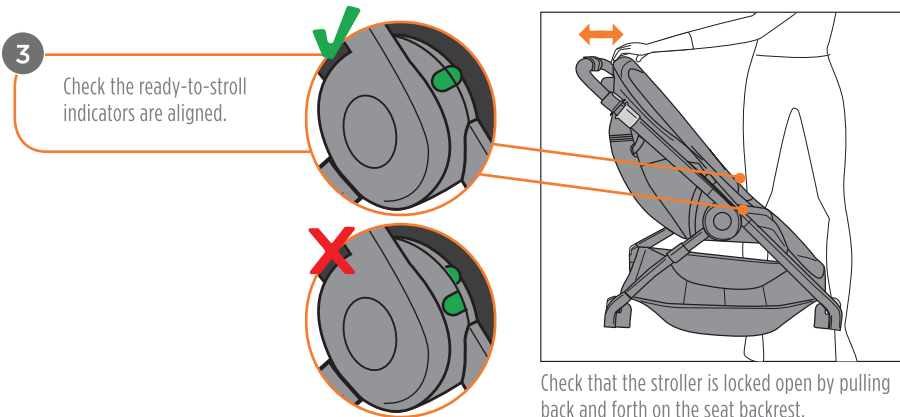
More tips and videos on ergobaby.com

1A. UNFOLD THE STROLLER



Stand the stroller on the ground. Press on the unfold button with one hand and lift the handlebar with your other hand until you hear a "CLICK".

Lift the seat backrest until it is locked in position.



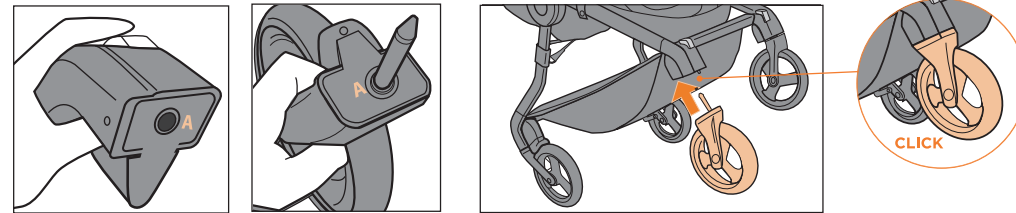
Check the ready-to-stroll indicators are aligned.

Check that the stroller is locked open by pulling back and forth on the seat backrest.

Reminder: Unfold button does not need to be pressed throughout range of motion of unfold.

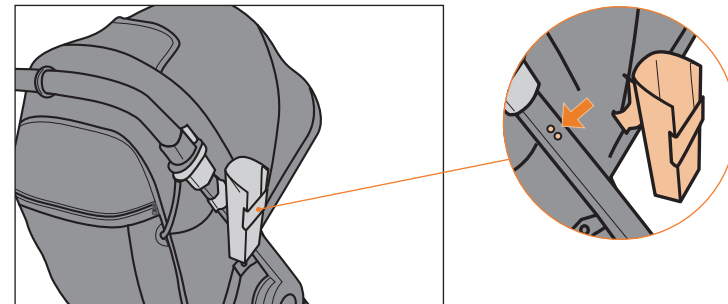
1B. INSTALL THE WHEELS

Match the letters on the wheels with their respective mount (A-A and B-B). Insert wheels into stroller openings until you hear an audible click. Pull on the wheels to check they are securely attached.



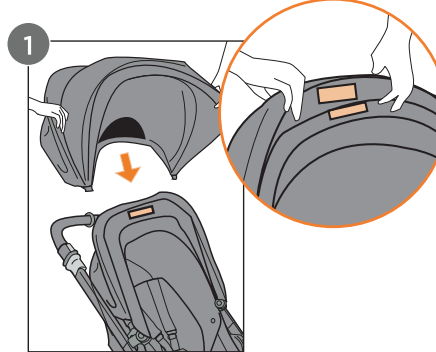
1C. INSTALL THE CUP HOLDER*

The cup holder can be attached to either the left or right side. Align cup holder bumps with the corresponding holes on the handlebar tube. Pull down on the cup holder to confirm it is secured in place.

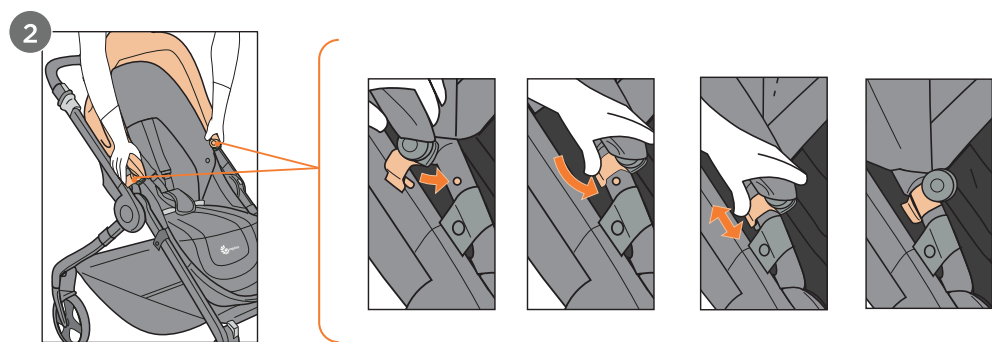


***Reminder:** Cup holder weight limit is 1 lb (0.5 kg). Maximum cup size for cup holder is 200mm tall. Caution: Only use closed containers in the cup holder to prevent liquid from spilling onto your baby.

1D. INSTALL THE SUNSHADE



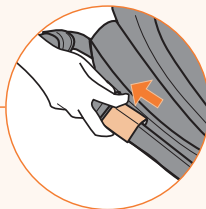
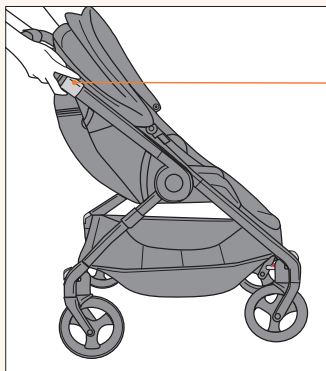
Attach the sunshade middle velcro to the top of the seat backrest.



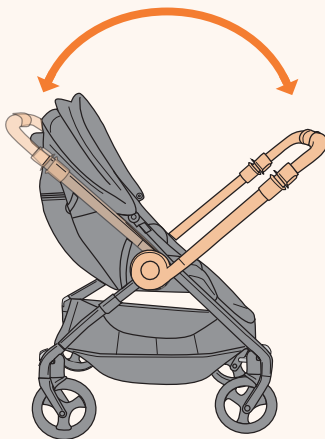
The sunshade attachment is securely attached when clamped around the seat backrest tube and sunshade attachment bumps are aligned with the corresponding holes in the tube. First, clamp the attachment around the tube. Then slide the attachment up and down until the bumps settle into the holes in the seat backrest tube.

2

HOW TO FLIP THE HANDLEBAR BETWEEN THE FORWARD-FACING & PARENT-FACING POSITIONS



Pull up on the handlebar levers to unlock the handlebar and flip into the desired position until you hear an audible 'CLICK'.



Reminder: Always correctly set your wheels when flipping the handlebar.

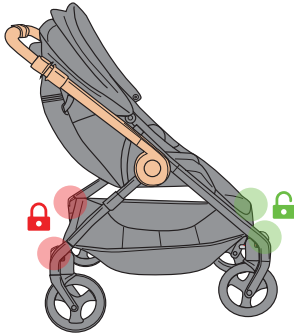
See "How to use the steering locks" for detailed instructions.

3

HOW TO USE THE STEERING LOCKS

Engage the steering locks on the wheels underneath the handlebar.

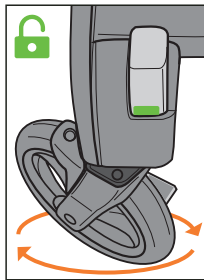
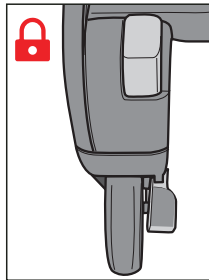
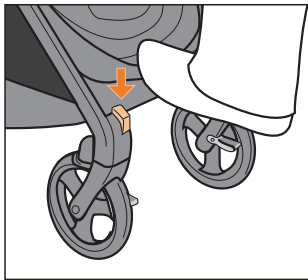
FORWARD-FACING



PARENT-FACING



The wheels farthest from you should be unlocked to swivel and steer.



TO LOCK: press the steering lock button with your foot to engage the lock for each wheel and rotate the wheel by pushing the stroller until the wheel locks in place.

TO UNLOCK: press the steering lock button with your foot again to release the lock for each wheel, as indicated by the visible green strip.

4-WHEEL STEERING: Wheels can be set to 4-wheel steering (all wheels unlocked) on smooth, level surfaces like an airport or mall for best maneuverability.

	4-WHEEL STEERING	TRADITIONAL STEERING
smooth, level		
uneven		
rough		

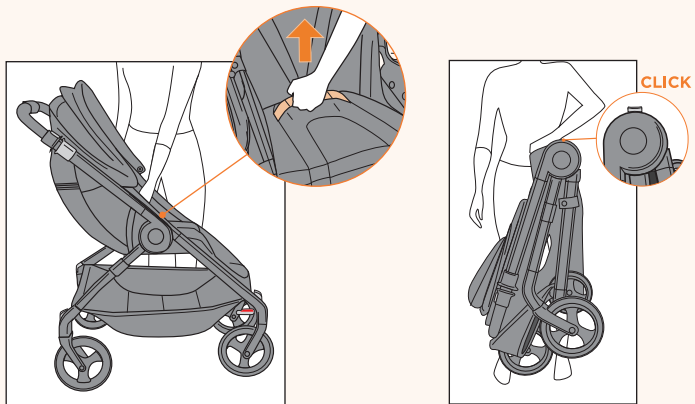


4

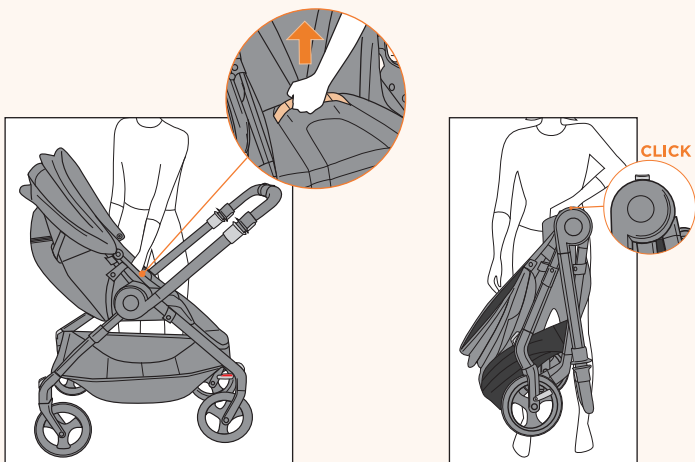
HOW TO FOLD THE STROLLER

Pull on the fold handle and lift up. Continue pulling until the unfold button pops up. You will hear an audible "CLICK" when the fold lock is engaged.

FORWARD-FACING



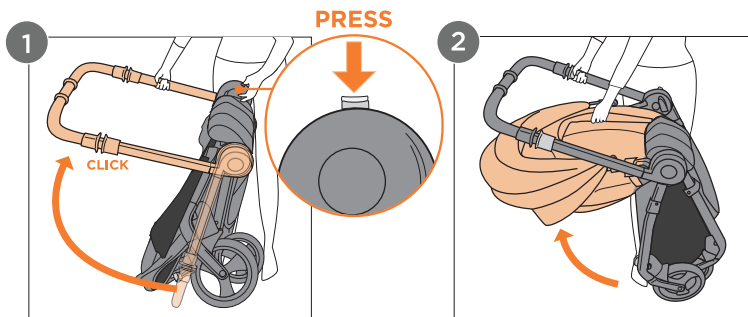
PARENT-FACING



5

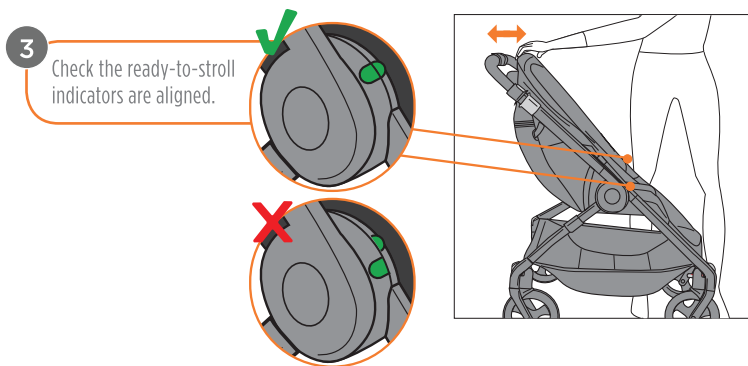
HOW TO UNFOLD YOUR STROLLER

FORWARD-FACING



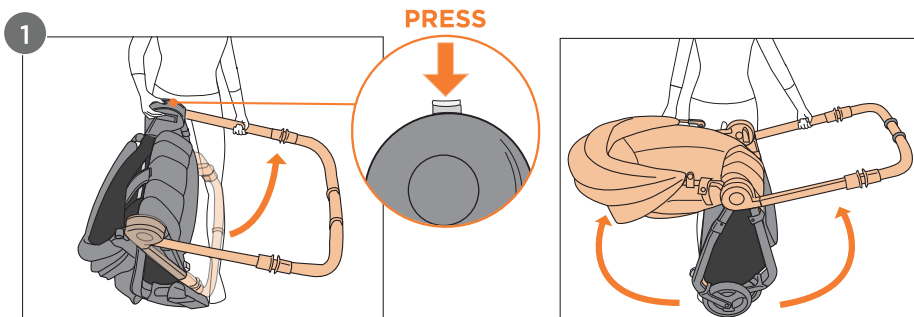
Stand the stroller on the ground. Press on the unfold button with one hand and lift the handlebar with your other hand until you hear a “CLICK”.

Lift the seat backrest until it is locked in position.



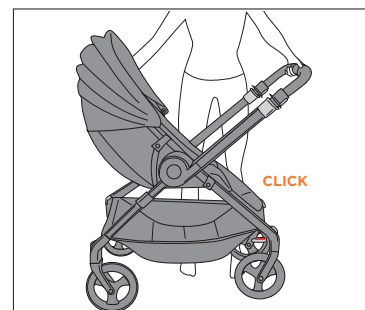
Reminder: Unfold button does not need to be pressed throughout range of motion of unfold.

PARENT-FACING

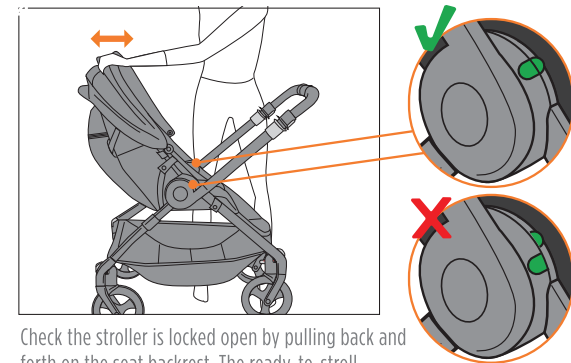


Press on the unfold button with one hand and guide the handle up with your other hand.

Place the wheels on the ground, then guide the handlebar and seat backrest (both pieces) up.



You will hear a “CLICK”.



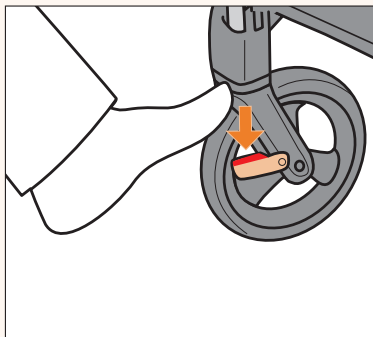
Check the stroller is locked open by pulling back and forth on the seat backrest. The ready-to-stroll indicators should be aligned.

6

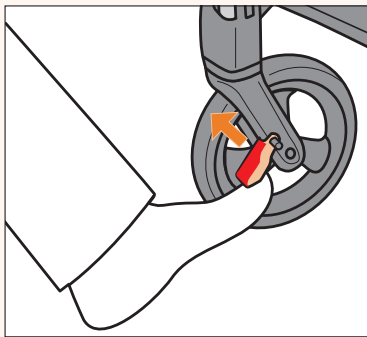
HOW TO USE THE STROLLER BRAKES

Lock both parking brakes on the wheels underneath the handlebar by pressing firmly down on the brake pedal with your foot. Confirm that the two brakes are engaged by gently rocking the stroller. The braked wheels should not roll backwards or forwards. Flip each parking brake upwards to release.

LOCK



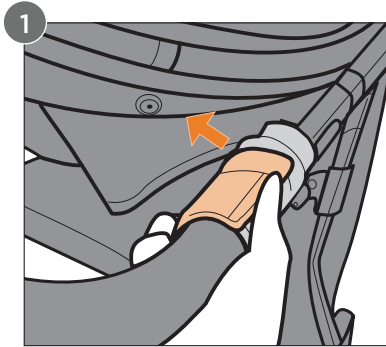
UNLOCK

**Reminders:**

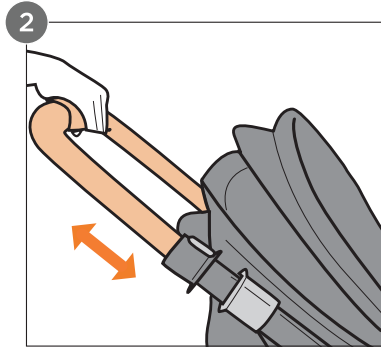
When setting the brakes on a level surface without the steering locks engaged, the stroller may have some side to side movement. To avoid any movement, it is recommended to engage the steering locks before setting the brakes.

7

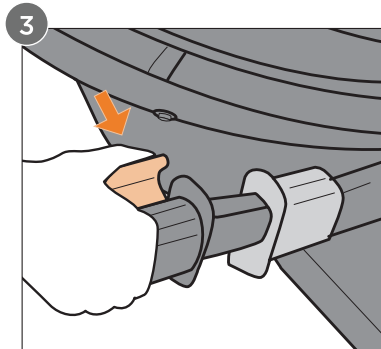
HOW TO ADJUST THE HANDLEBAR HEIGHT



Release height adjust locks.



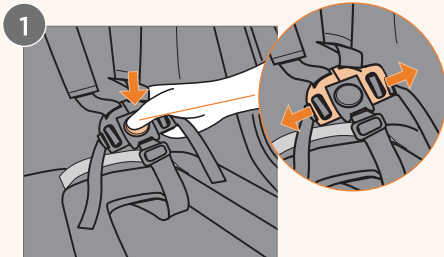
Pull the handlebar in or out.



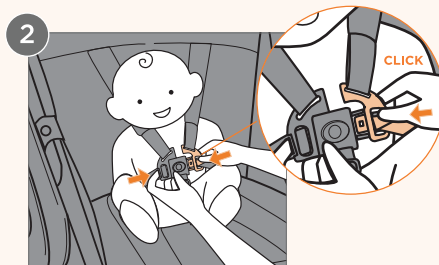
Engage the height adjust locks to secure.

8

HOW TO SECURE YOUR CHILD

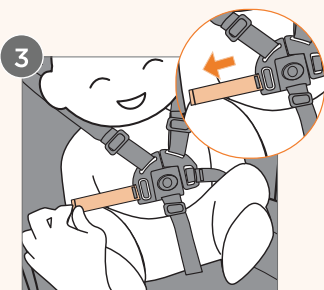


Unclick the harness by pressing on the center button.

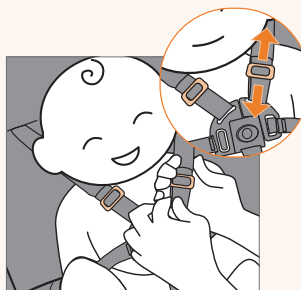


Place the child in the seat and insert buckle tongues until you hear an audible “CLICK”.

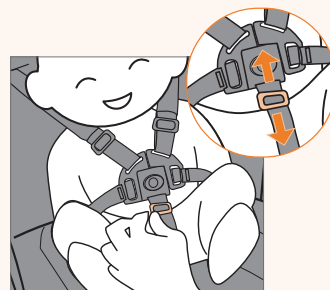
ADJUSTMENTS



The waist straps can be tightened by pulling on the free ends of the strap, and loosened by pinching the sides of the buckles.



The length of the shoulder and crotch straps can be adjusted by moving the slides up or down.

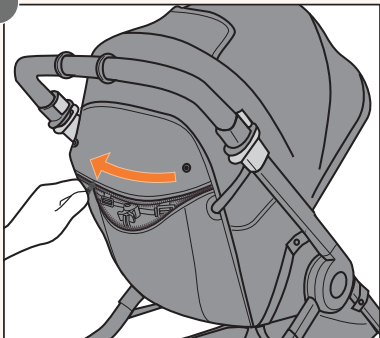


Reminder: The Comfort Cushion (sold separately) is recommended for use with infants under 3 months. To fully tighten the shoulder straps, slide the shoulder pad all the way down and compress the pad until the slide is exposed. Adjust the height as needed.

9

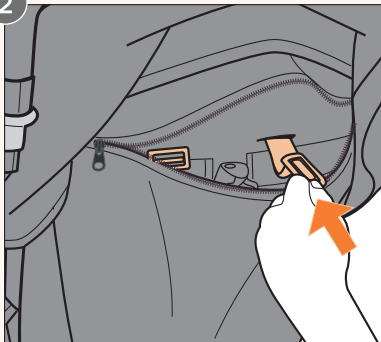
HOW TO ADJUST THE STRAPS AS YOUR CHILD GROWS

1



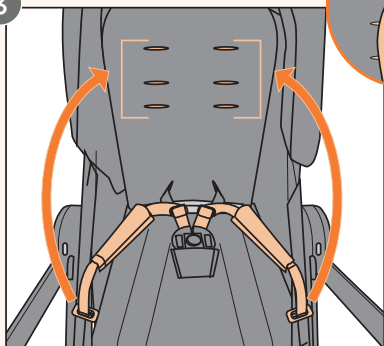
To change the height of the shoulder straps, open the seat back pocket.

2



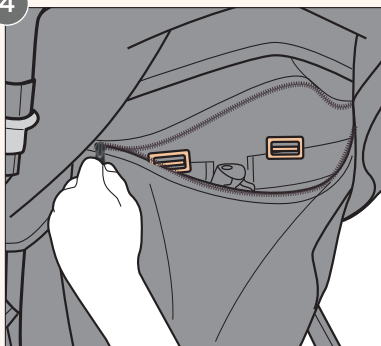
Push the plastic harness stoppers through the slot on the seat back.

3



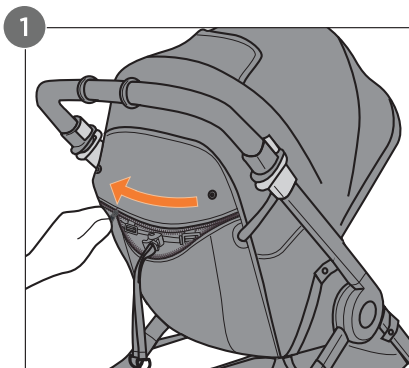
Feed the plastic harness stoppers through the new slot, making sure to use the same height on both sides.

4

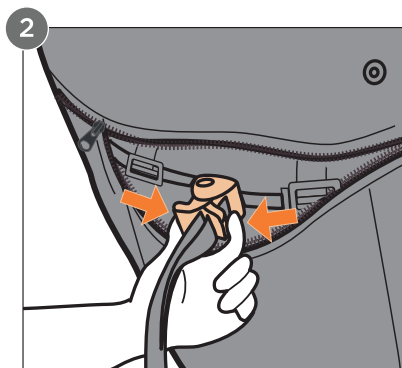


The tab will flatten against the slot and lock the straps in place.

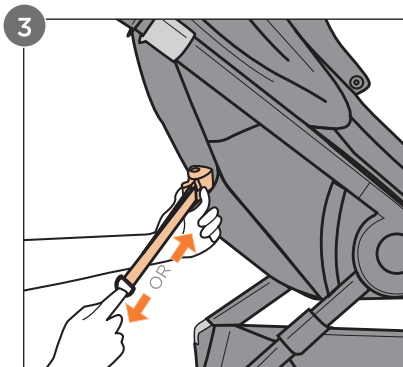
10 HOW TO ADJUST THE SEAT RECLINE



Open seat back pocket to access recline strap.



Squeeze release tabs to adjust recline straps.

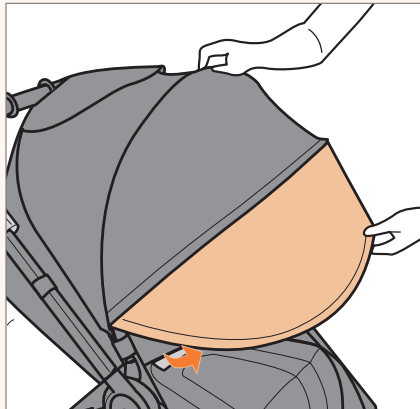
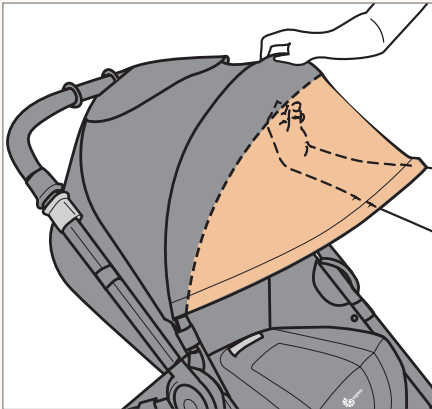


Adjust length as needed.

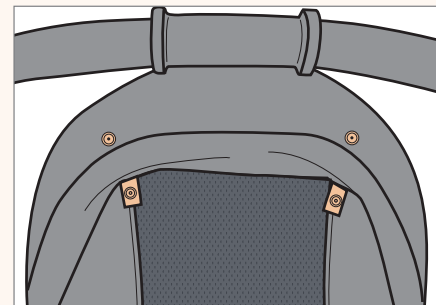
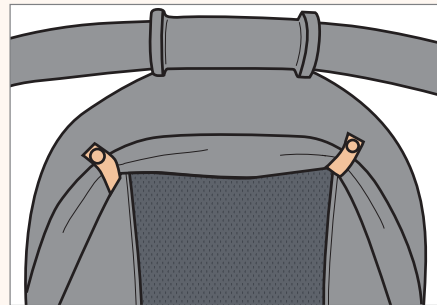
Reminder: Ensure that the recline is the same on both sides by keeping the free ends of the recline strap the same length. Always use the stroller in the fully reclined position for babies who haven't yet developed good head and neck control.

11

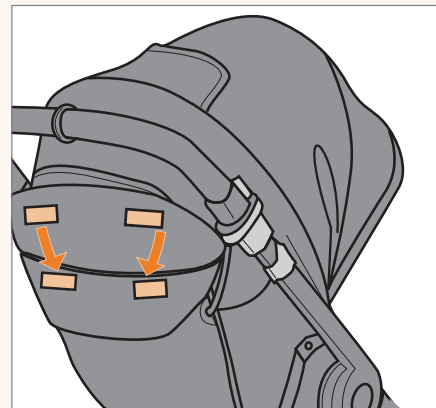
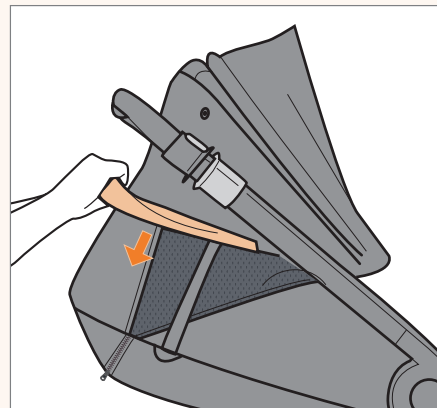
HOW TO USE THE SUNSHADE



Pull the sunshade and sunshade extension forward for maximum coverage. The peekaboo window can be used to check on your child without having to adjust the sunshade. When not in use, the extra panel can be tucked back under the sunshade.



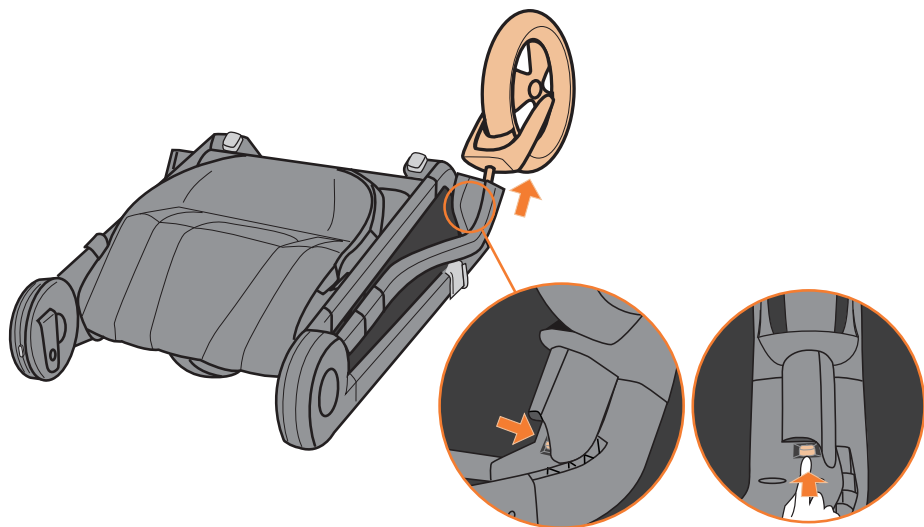
The rear sunshade panel has been secured open for maximum airflow. To secure the rear sunshade panel to the seat backrest, undo the snaps and unroll the fabric downward. Attach the rear sunshade velcro tabs to the back of the seat backrest.



12

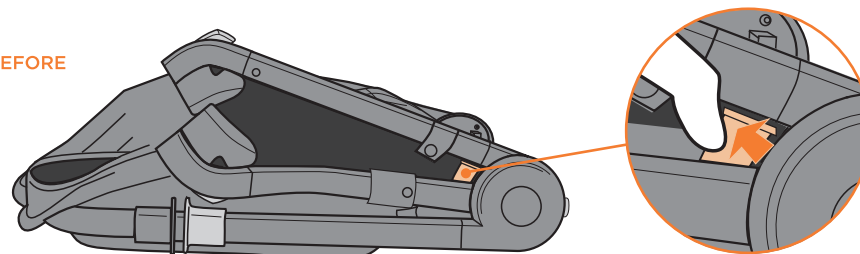
HOW TO FOLD STROLLER FOR STORAGE

Press the wheel removal button to remove the wheels for packing or long-term storage. This small metal button may be partially obscured by the plastic block on the leg tube.

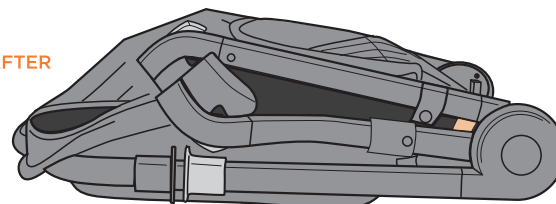


For a more compact fold to fit stroller frame into the original packaging, carefully press the fold stopper out of the way while lowering the leg down gently.

BEFORE



AFTER



- Avoid excessive exposure to sun or heat, which may cause fading or warping.
- Keep the handlebar, folding mechanisms, and wheel steering locks free of abrasive grime and moisture. If wet, use a soft cloth to dry.
- Regularly check all rivets, screws, and safety devices for tightness and security. Inspect wheels and replace if necessary.
- All plastic and metal parts may be wiped clean with a damp cloth.
- Never use bleach or detergents to clean this product. Do not submerge or use running water on any metal or plastic parts of the stroller.
- Hand wash the cup holder in soapy water.
- Upholstery and sunshade can be wiped down with warm water and mild detergent. Air dry.

WARRANTY

Disclaimer: Ergobaby™ uses only the highest quality and safest dyes possible to ensure a product that will retain its color. There is always a possibility that colors will fade with washing. Ergobaby cannot be held responsible for faded colors due to laundering.

Warranty: Please see Ergobaby.com for information about our warranty. The ERGO Baby Carrier, Inc. warrants its products against defects in materials and workmanship. We stand behind all our products and will either repair or replace, free of charge during the first 24 months after purchase, any Ergobaby™ 180 Reversible Stroller that is defective. Proof of purchase is necessary and product must be returned for warranty service. Should you have a warranty claim, please contact Ergobaby Customer Service at: customerservice@ergobaby.com, or 888-416-4888.

Warranty Coverage does not extend to damage caused by misuse or any use of the 180 Reversible Stroller that is not in accordance with the instructions stated in this manual. Warranty coverage does not extend to any 180 Reversible Stroller that has been modified from its original construction in any way. Different or additional warranty rights may exist in the purchaser's jurisdiction. To the extent that different or additional warranty rights exist under the laws of the purchaser's jurisdiction, those warranties shall apply and be in addition to the warranty rights.